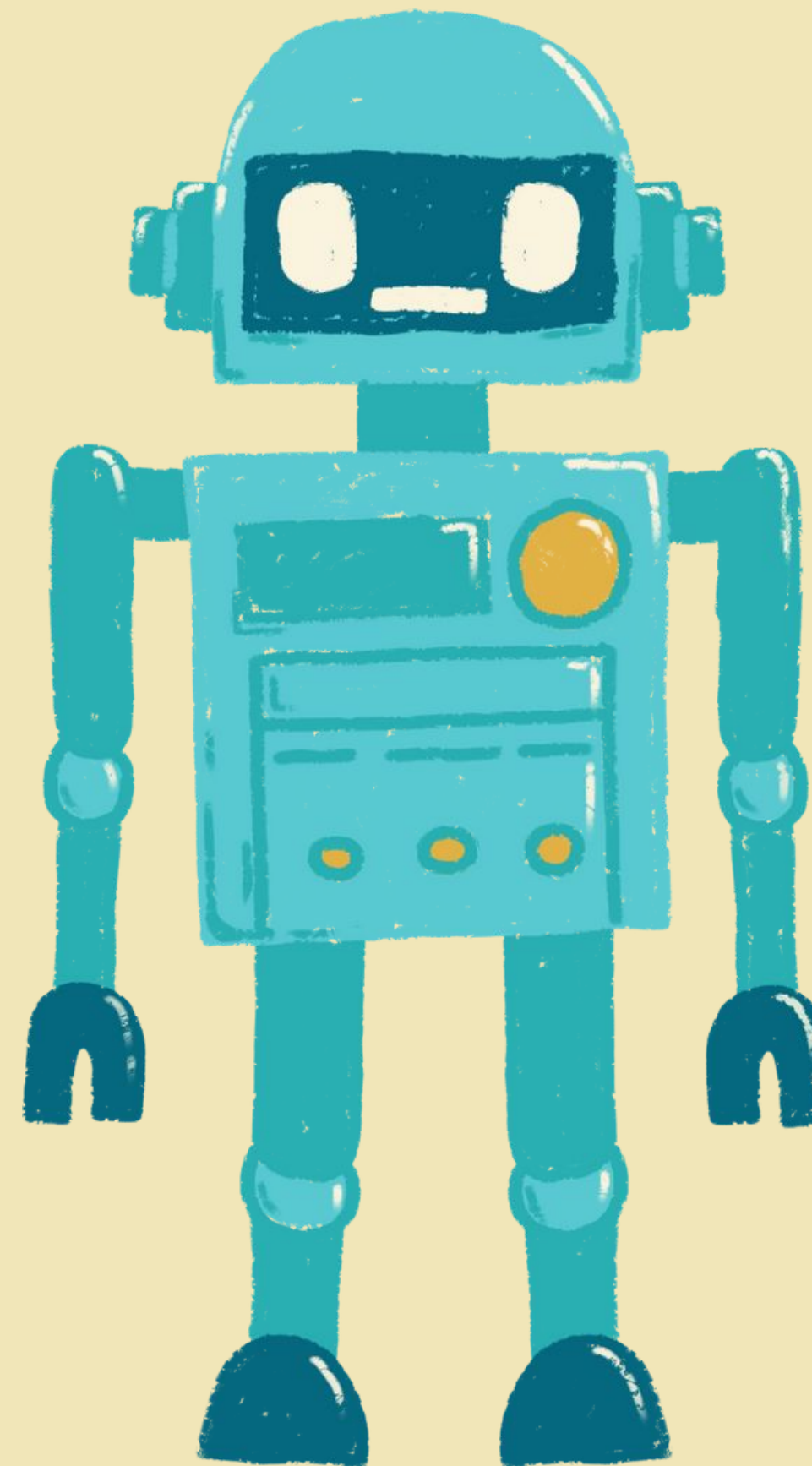


Create your Custom AI

by Laimonas Ragauskas

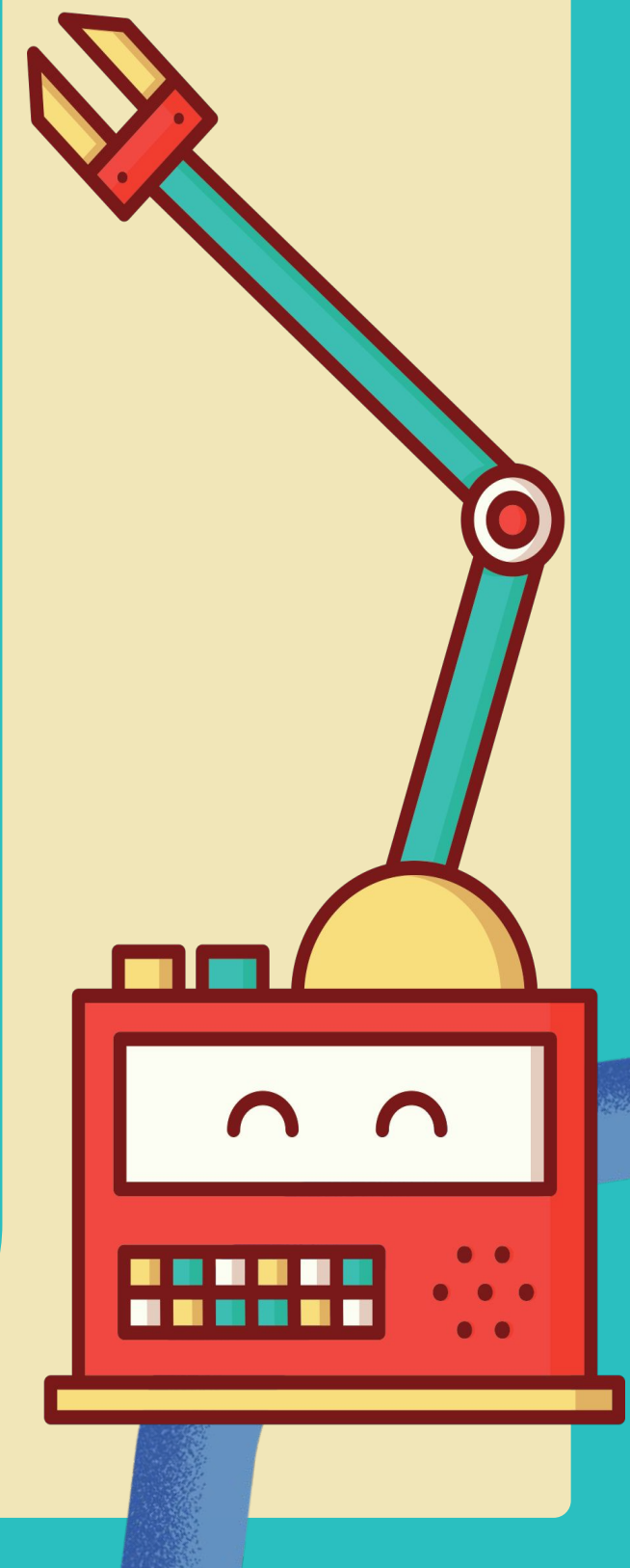


INTERNATIONAL
YOUTH WORK
TRAINERS GUILD



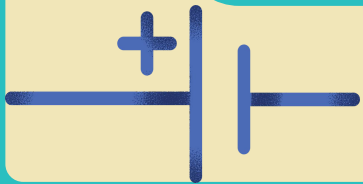
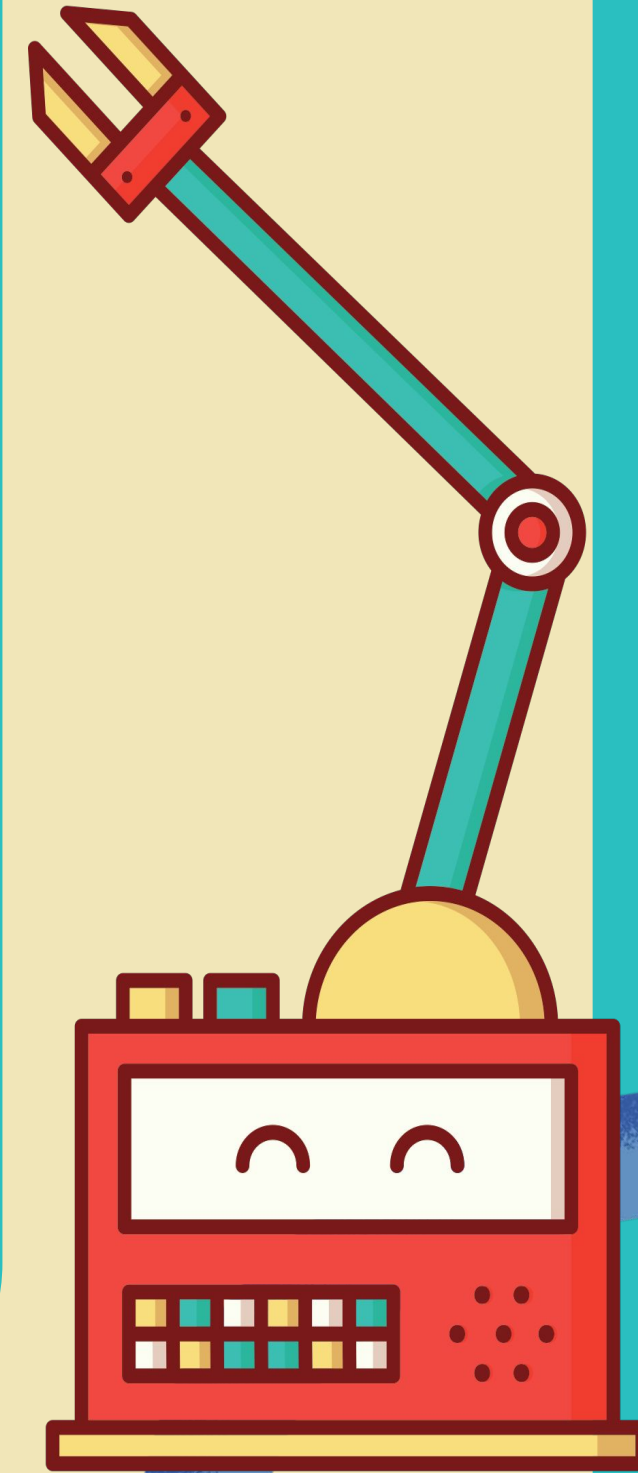
Co-funded by
the European Union

AI Agents, Chatbots, Personal AI
assistants, AI friends, Custom AI,
Agentic AI,



Types of Generative AI tools

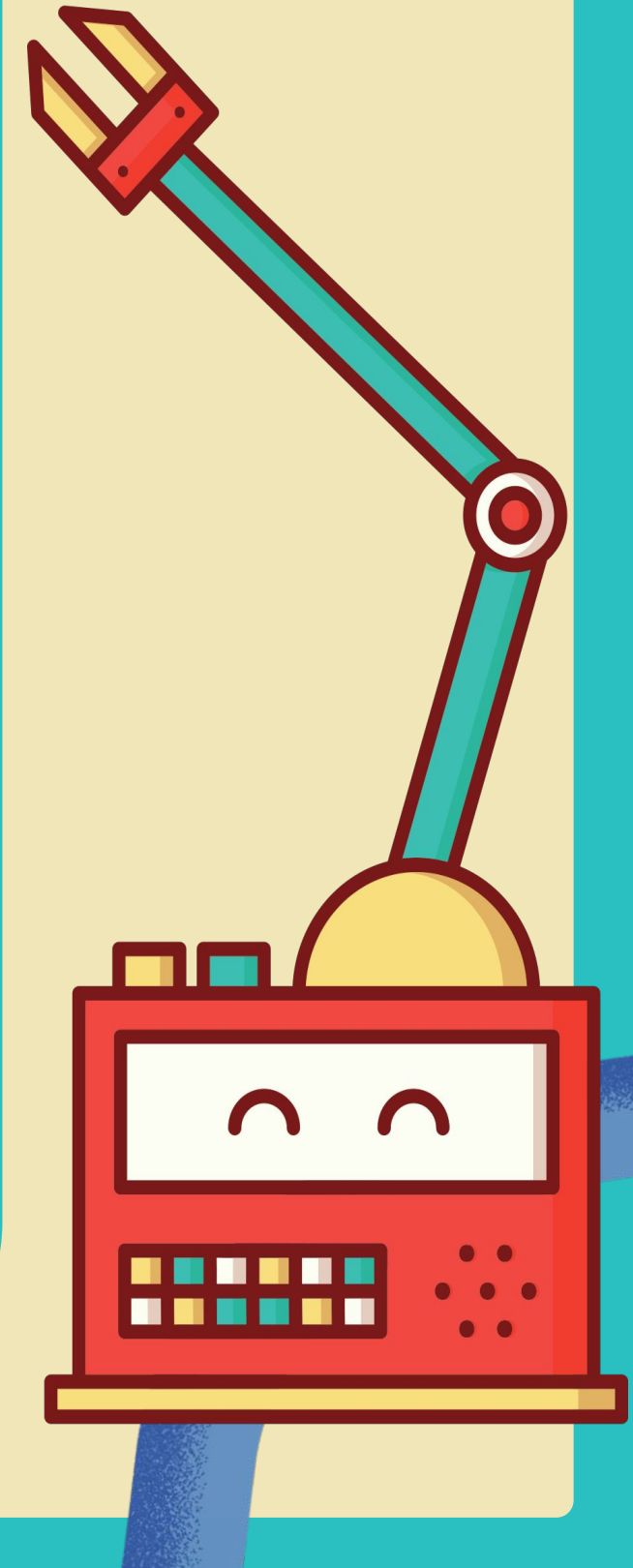
- Reactive AI
- Custom AI
- Agentic AI



REACTIVE AI

Reactive AI – waits for your prompt and gives an answer.

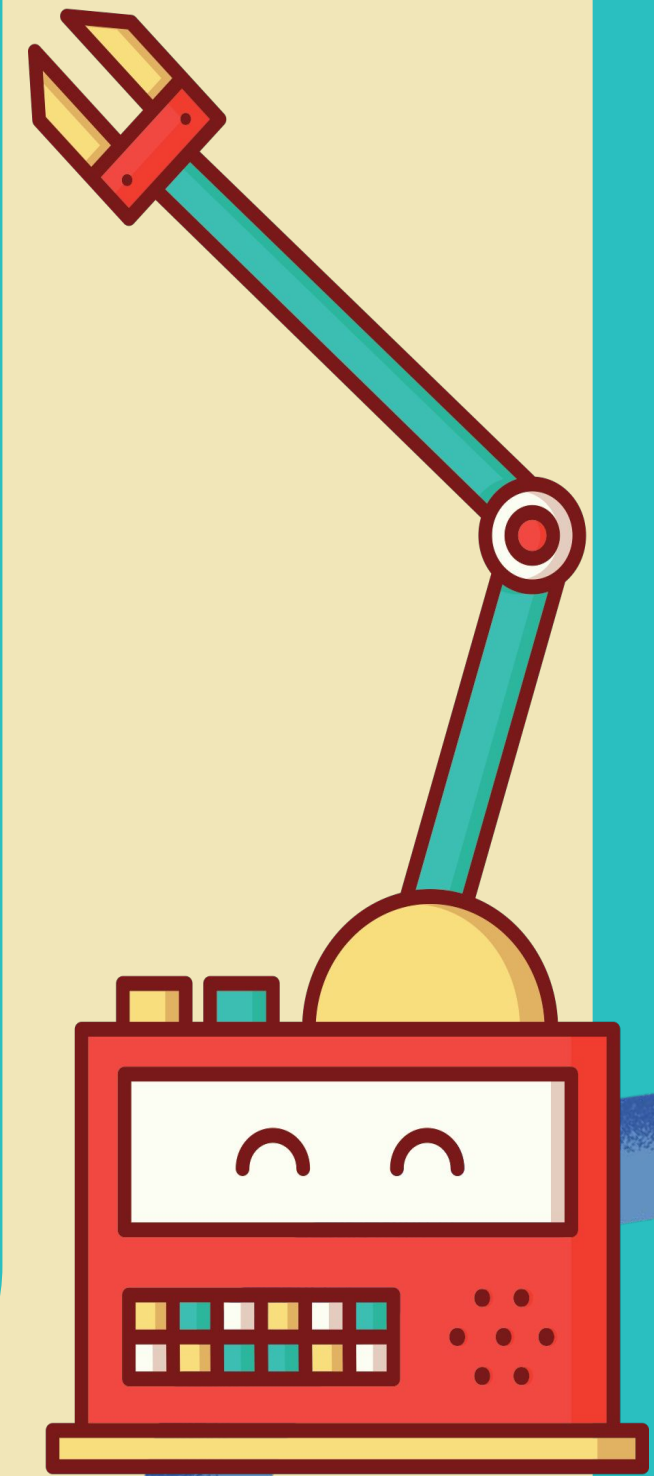
Example: ChatGPT/Mistral/Perplexity answering your question.



CUSTOM AI

Custom AI – still waits for your prompt, but it already knows its role and style.

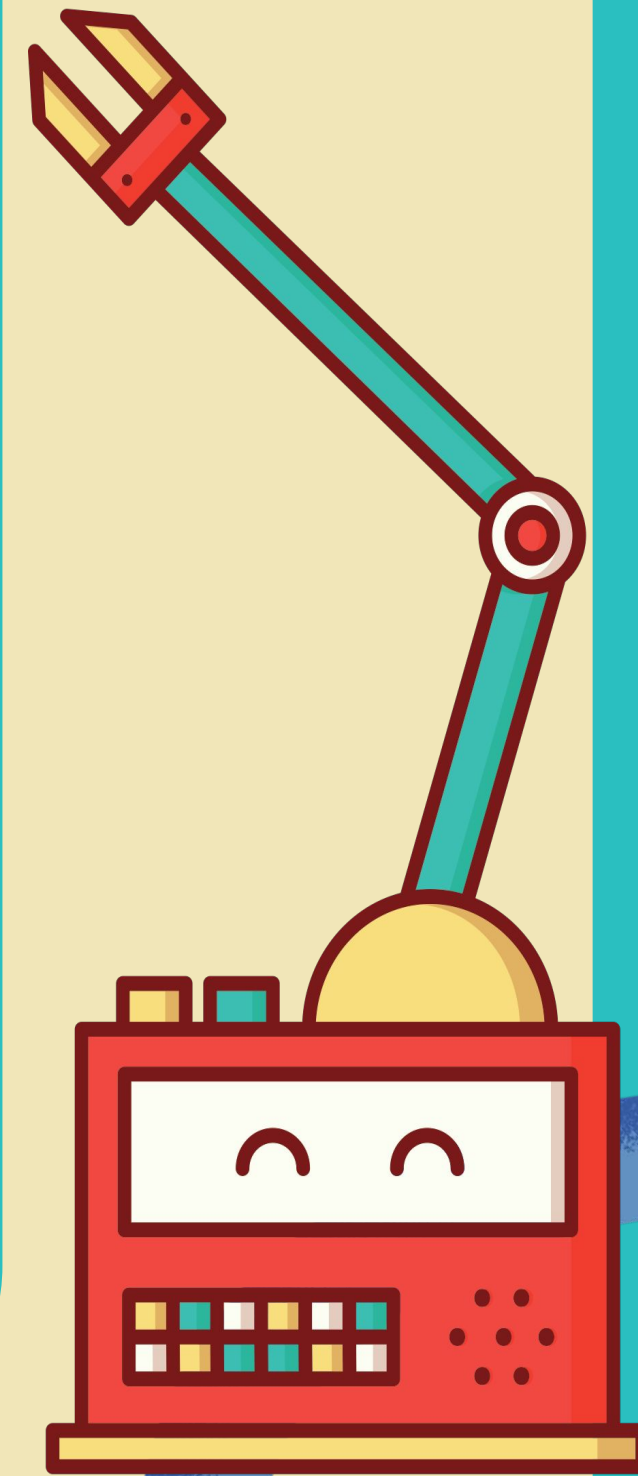
Example: a CustomGPT/ Perplexity Space/ Mistral Agent trained to act as your training assistant.



AGENTIC AI

Agentic AI – goes further. It can plan, decide, and act on its own to reach a goal.

Example: an AI that automatically searches, analyses, and sends you a report every day.



AGENTIC AI

Follow the developments:

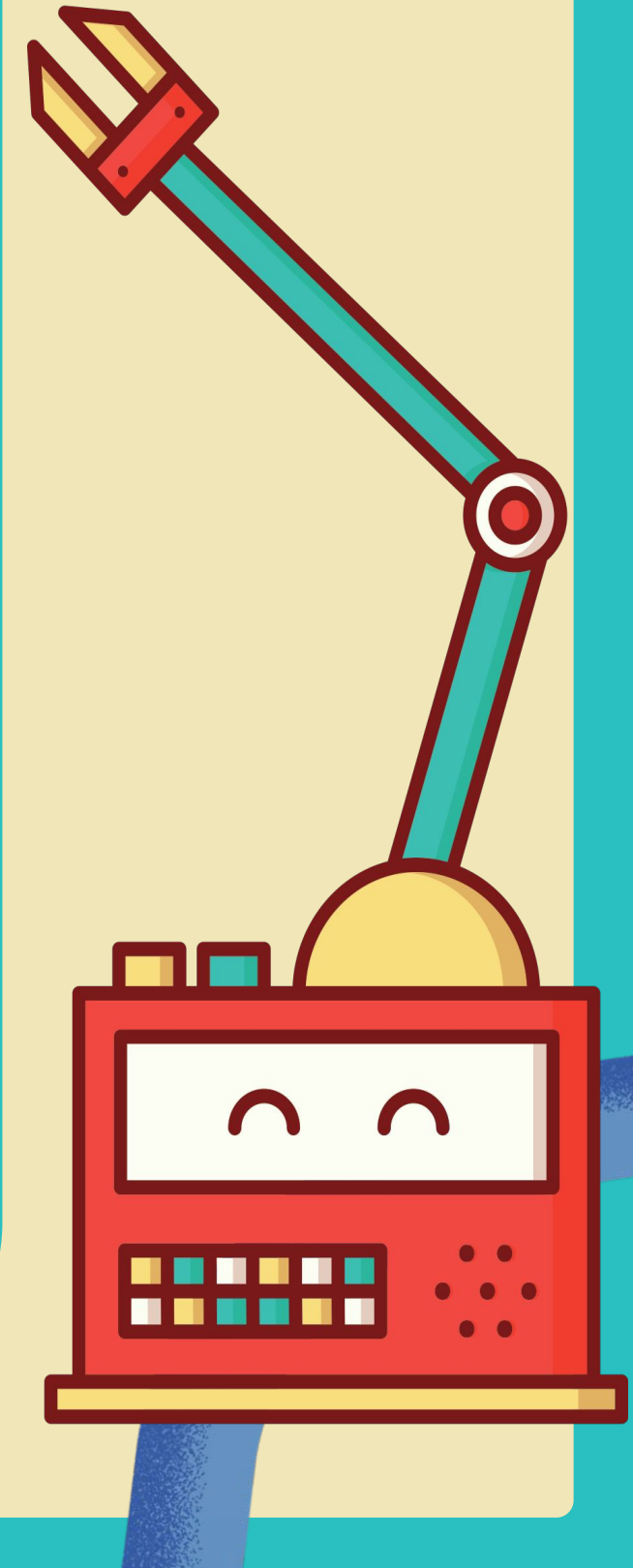
- AutoGPT - open-source framework for autonomous agents built on LLMs.
- BabyAGI - is an autonomous agent framework designed to generate and run a sequence of tasks based on a user-provided objective.
- There are various commercial applications of the framework or custom-coded solutions for more autonomous tasks

Scan QR code to IBM page explaining more about BabyAGI

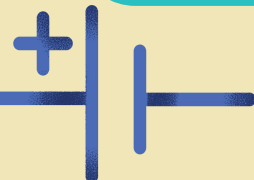
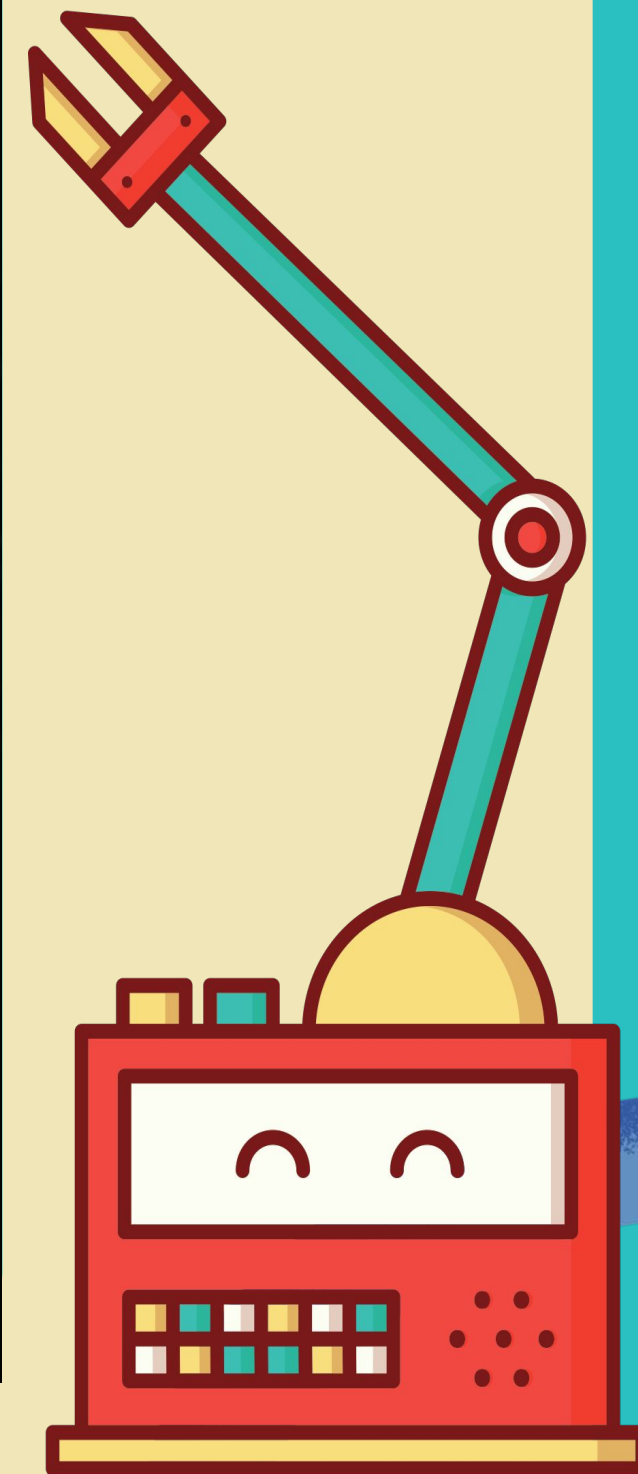


Agentic AI

Agentic AI refers to an advanced class of artificial intelligence systems that are designed to operate with a higher degree of autonomy, reasoning, and adaptability to achieve pre-determined goals with minimal, or no, continuous human intervention.

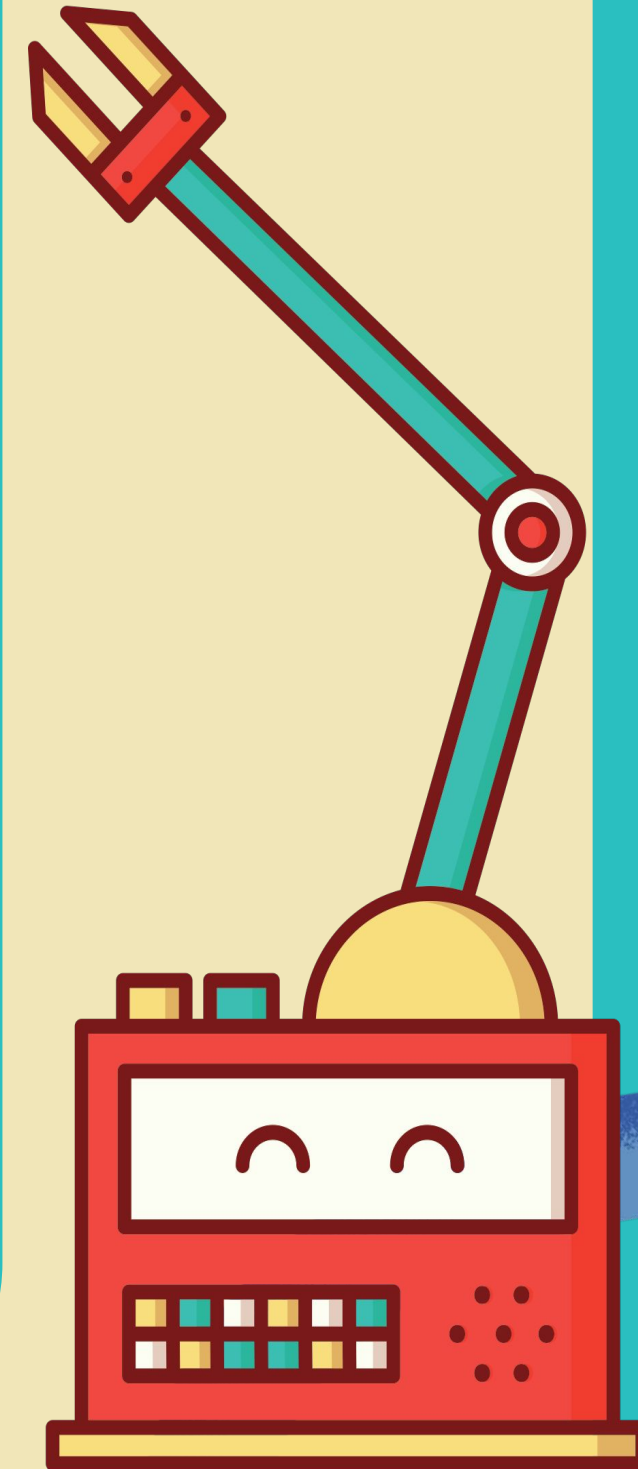


LONG RUNNING AI AGENT



Focus on Custom AI 'assistant'

- Understands its purpose – you can define what it's for (e.g. creating reflection questions, summarising reports, or designing activities).
- Keeps a consistent role and tone – always replies in the same professional, educational, or friendly style without needing reminders.

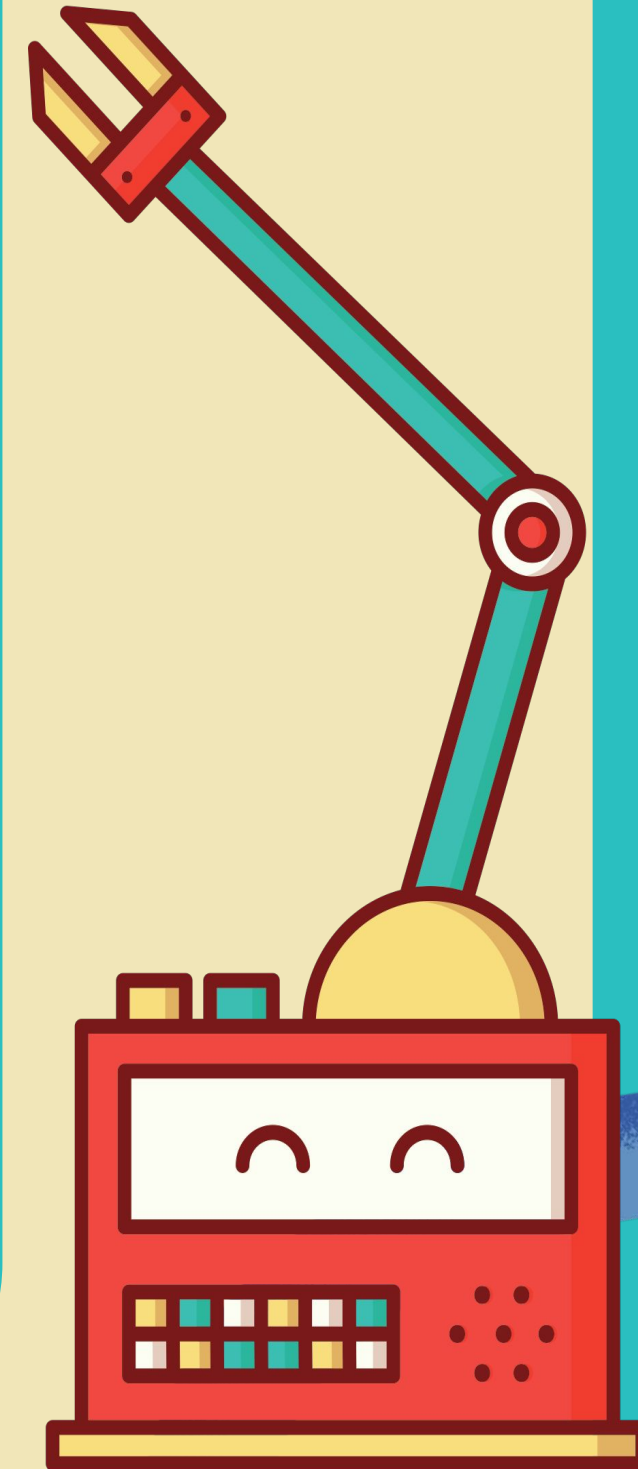




Focus on Custom AI ‘assistant’

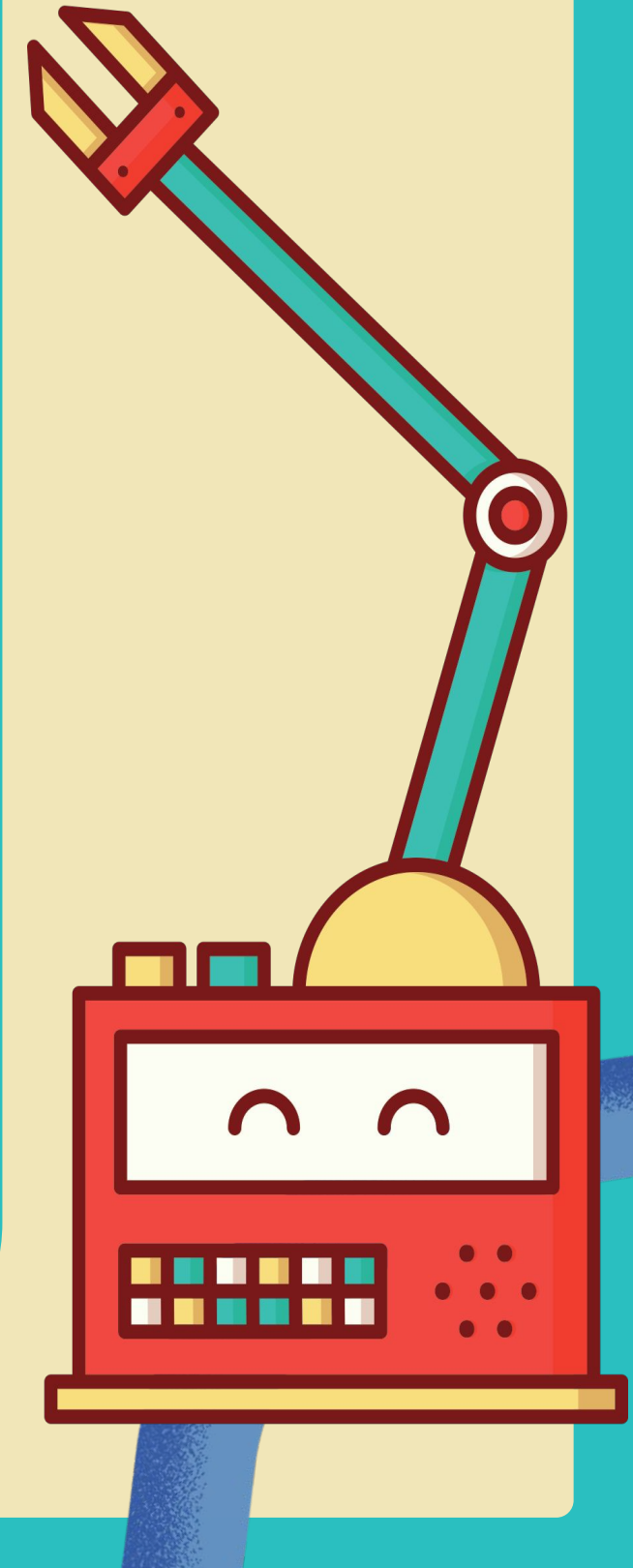
- ***Remembers its boundaries** - you can set what it should and shouldn't do, making it more reliable for specific contexts.
- **Knows your materials** – you can upload documents or links, so it responds based on your content, not generic data.

***It also randomly ‘forgets’ to search materials or gets ‘lazy’**



Focus on Custom AI 'assistant'

- Saves time – you don't have to repeat the same instructions every time you start a chat.
- Learning about AI - Great way to learn about the way AI tools function





let's practice

